

KENTALROOF-A CONFORT 630 T4 5,5kW (279634132AL)

GENERAL DATA



ROOF FAN WITH FOLDING SYSTEM AND ALUMINIUM COWL

MANUFACTURING FEATURES:

- Protection cowl made of anticorrosive treated aluminum easily removable for motor and impeller maintenance thanks to the integrated folding system.
- The design of the cowl with a **rounded shape** is specific to minimize the risk of water ingress due to rain.
- Equipped with a **hinged system** to open the motor-impeller set. This system allows easy maintenance and cleaning of the set without the need to disassemble the entire structure. The opening is possible in 2 inclinations: approximately 45° and 90°, as required by the intervention.
- Structure in anticorrosive galvanized steel and support frame for adaptation to the roof with anti-bird protection grid.
- High-performance, backward-curved blade (reaction) impellers designed to work without scroll. Self-cleaning system, built in galvanized steel treated with anti-corrosion.
- Standard asynchronous squirrel cage motor with IP-55 protection and Class F insulation. Standard voltages 230V 50Hz for single phase motors, 230/400V 50Hz for three phase motors up to 4kW & 400/690V 50Hz for higher powers and 400V 50Hz for 2 speed motors.

APPLICATIONS

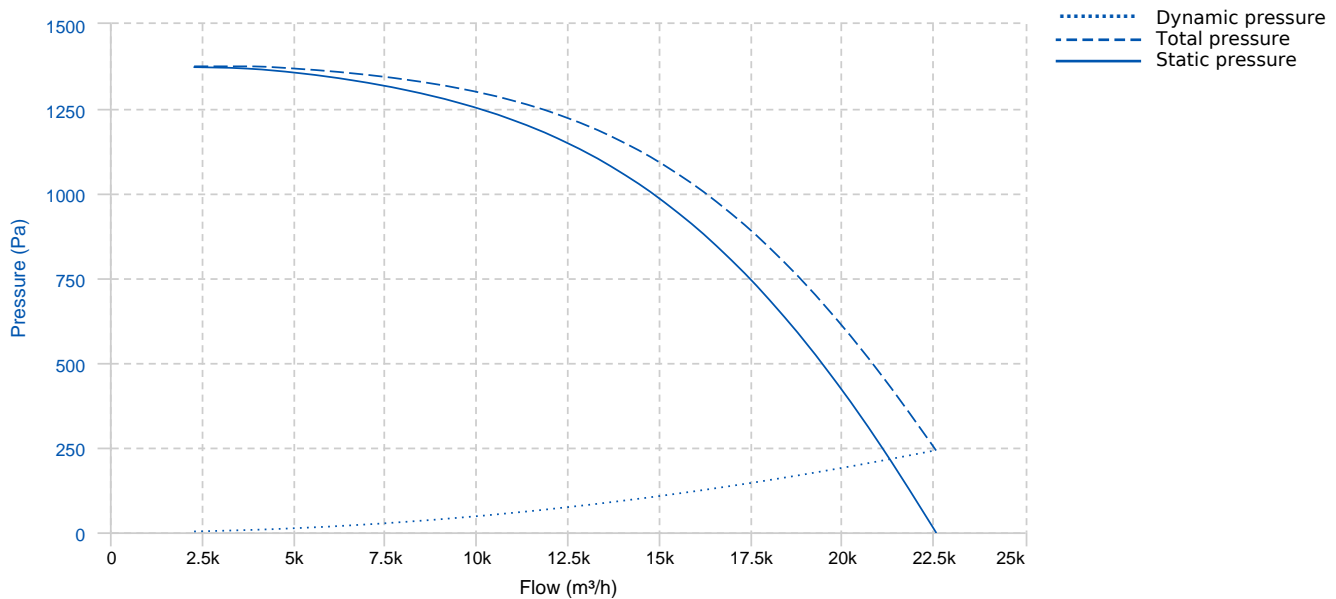
Designed for deck or roof mounting, they are indicated for:

- Smoke extraction.
- Air renewal in all types of buildings and industries.
- Maximum continuous working temperature: transported air 80°C, ambient 60°C to -25°C in three-phase motors.

UNDER REQUEST

- Special voltages.
- Special construction for moving air at 120°C. Serie:

PERFORMANCE CURVE

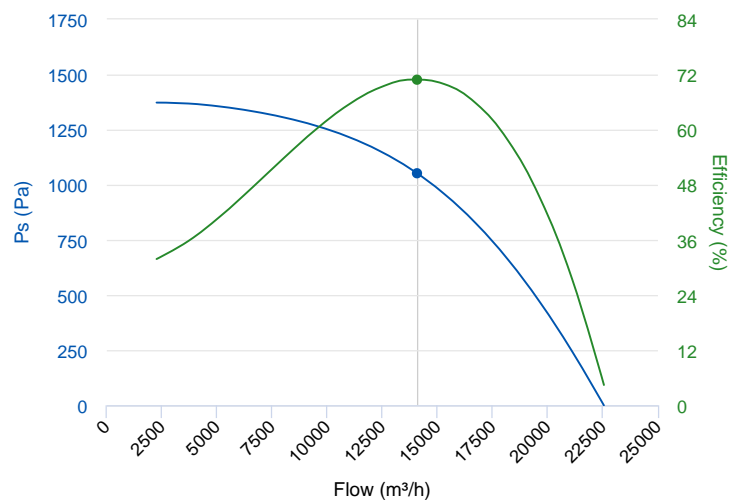


TECHNICAL DATA

Fan							
RPM	1460	Approx. weight	140 kg	Max. Flow	22550 m³/h		
Motor							
Power	5,5 kW	RPM	1460	I max. (400V)	10,5 A	I max. (690V)	6,09 A
Size	132S	Approx. weight	67 kg	Efficiency (%)	89.6 %	FP	0.86

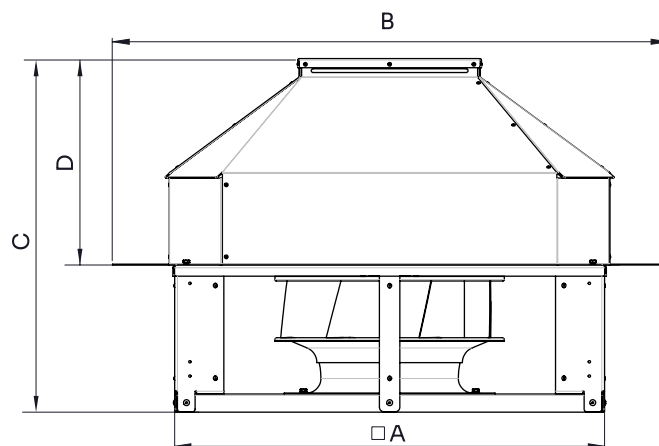
ERP DATA

Fan data sheet		
Fan type	Unit for non-residential ventilation (LOT 6)	
Typology	Unidirectional	
reports.other	None	
Type of driver	None	
Motor power (kW)	5.5	
	Fan values	ERP Requirements 2018
Max. efficiency (%)	70.94	53.23
Effic. Heat recovery (%)	-	
Pabs (kW)	6.116	
Flow (m³/h)	14099.99	
Static pressure (Pa)	1050.76	
Speed (m/s)	12.56	



	Fan values	ERP Requirements 2018
SFP (W/m3/s)	1561.64	

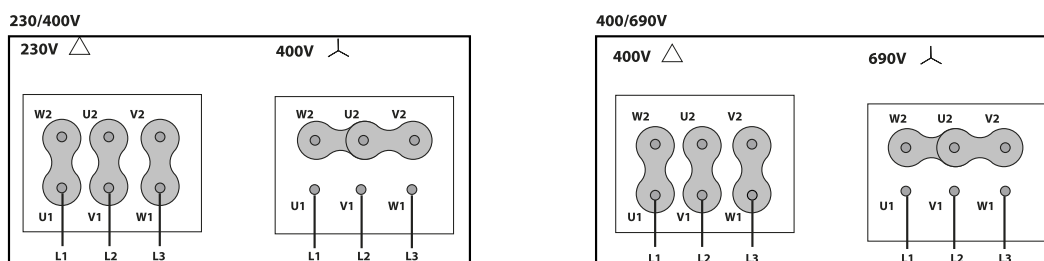
DIMENSIONS



Dimensions (mm)

A (int)	1035	B	1340	C	942.5	D	520
---------	------	---	------	---	-------	---	-----

WIRING DIAGRAM



ACCESSORIES



SAFETY SWITCH
INT 25 3P A
REF: INT253PA



CONNECTION FLANGE
AC 630
REF: 960003216



CIRCULAR SILENCER
SIL-C 630/630
REF: 960063063



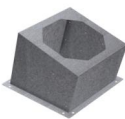
CIRCULAR SILENCER
SIL-C 630/1260
REF: 960063126



CIRCULAR SILENCER
SIL-CN 630/945
REF: 961063945



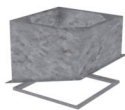
CIRCULAR-CIRCULAR ANTI-VIBRATION FLANGE
BAD 15 (Ø630)
REF: 960003465



INCLINED ROOF FAN SUPPORT
BTI 1015
REF: A-508701015XX



KENTALROOF VERTICAL DISCHARGE
KV KENTALROOF 630
REF: KVKNTR630



BTI + AMC MOUNTED
BTI+AMC 1015
REF: BTIAMC1015XX



CIRCULAR SILENCER
SIL-C 630/945
REF: 960063945



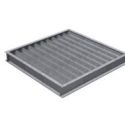
CIRCULAR SILENCER
SIL-CN 630/630
REF: 961063063



CIRCULAR SILENCER
SIL-CN 630/1260
REF: 961063126



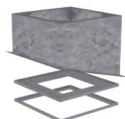
FREQUENCY SPEED CONTROLLER
SFC 400 III 12A *
REF: SFC400III12



DEPRESSION DAMPER (HORIZONTAL or VERTICAL PLACEMENT)
CMP-HUT 800x810
REF: CMPHUT8081

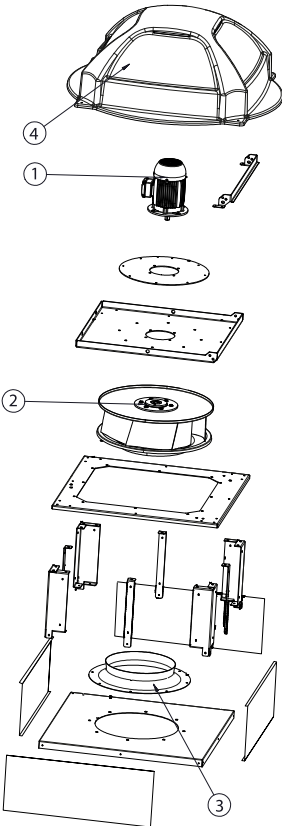


BTI + ACMP MOUNTED
BTI+ACMP 1015
REF: BTIACMP1015XX



BTI + ACMP+AMC MOUNTED
BTI+ACMP+AMC 1015
REF: BTIACMPAMC1015XX

SPARE PARTS



	Code	Model	Qty
1	721001275	MOTOR 5,5kW T6 B5 400/690V	x1
2	R-R63D1L630-38	IMPELLER R63D1L630x180x38 LG	x1
3	R-BAD630PK1	INLET CONE ED11P 630	x1
4	R-279634478A	ROOF COWL KENTALROOF-A 630	x1